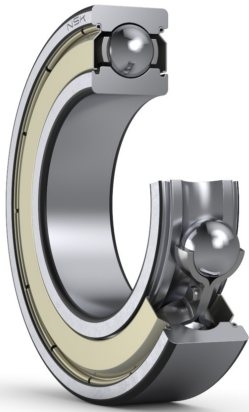




PRODUCT DATASHEET

Datasheet creation date: 2025/11/22 9:11 (UTC)



6003ZZ

Single-Row Deep Groove Ball Bearings

Parts Number

6003ZZC3

Boundary Dimensions

d	17	mm	Bore diameter
D	35	mm	Outside diameter
B	10	mm	Width
r (min.)	0.3	mm	Chamfer dimension

Basic Load Ratings

C_r	6600	N	Basic dynamic load rating
C_{0r}	3250	N	Basic static load rating

Speeds

Grease	24000	min ⁻¹	Grease lubrication
--------	-------	-------------------	--------------------

Abutment and Fillet Dimensions

da (min.)	19	mm	Diameter of shaft abutment
da (max.)	21.5	mm	Diameter of shaft abutment
Da (max.)	33	mm	Diameter of housing abutment
ra (max.)	0.3	mm	Radius of shaft or housing fillet
Dx (min.)	0	mm	Diameter of snap ring recess in the housing
Cy (max.)	0	mm	Distance from outer ring side face to snap ring back face

Calculation factors

fo	14.4		Factor
----	------	--	--------

Additional information

z	10		Number of Balls
Dw	4.762	mm	Ball Diameter

Mass

(approx.)	0.041	kg	
-----------	-------	----	--

